



Institutional Sign In

All



ADVANCED SEARCH

Conferences > 2021 International Seminar on...

Forecasting of Sales Based on Long Short Term Memory Algorithm with Hyperparameter

Publisher: IEEE

Cite This



Ali Khumaidi ; Ika Ayu Nirmala ; Herwanto Herwanto All Authors

30 Full Text Views



Alerts

Manage Content Alerts

Add to Citation Alerts

More Like This

Rule-Based Business Data Processing in Service Coordination Systems

2014 Ninth International Conference on Broadband and Wireless Computing, Communication and Applications

Published: 2014

Data analysis with empirical probability functions as a data mining method: Employing CF-miner and pattern difference quantifiers

2018 Smart City Symposium Prague (SCSP)

Published: 2018

Show More

Abstract



Download PDF

Document Sections

- I. Introduction
- II. Material and Method
- III. Result and Discussion
- IV. Conclusion

Abstract:Increasingly competitive business competition requires business people to re-design their business strategies, one of which is by applying forecasting methods. Several fo... [View more](#)

Metadata

Abstract: Increasingly competitive business competition requires business people to re-design their business strategies, one of which is by applying forecasting methods. Several forecasting techniques have been used in sales prediction research with fairly good accuracy in a short period, the research will focus on optimizing the hyperparameter LSTM algorithm to improve the performance of the model formed over the next 60 days. The method used in this study is the Cross Industry Standard Process for Data Mining (CRISP-DM), in the preprocessing the data cleaning, labeling, summary, and data transformation. The data understanding stage applies the Exploratory Data Analysis method. The development of the LSTM model uses several parameters, namely data partition, number of hidden layers, dropout scenarios to prevent overfitting, number of neurons, epoch describing the number of training iterations, batch size is the amount of training data that must be considered in each process of updating the weights. The experimental results of the best LSTM model after experimenting with different parameters are hyperparameter batch size 30, epoch 150, 3 hidden layers and 3 dropouts, resulting in RMSE training of 0.0855 and RMSE testing of 0.0846.

Authors

Figures

References

Keywords

Metrics

More Like This

Accept & Close

Date of Conference: 29-30 January 2022 **INSPEC Accession Number:** 21684499
Date Added to IEEE Xplore: 29 March 2022 **DOI:** 10.1109/ISMODE53584.2022.9743079
► ISBN Information: **Publisher:** IEEE
Conference Location: Jakarta, Indonesia

☰ Contents

I. Introduction

Business actors are currently faced with the challenge of increasingly competitive business competition, which requires every business actor to re-design his business strategy in order to meet market demand. The industrial revolution 4.0 and the development of machine learning can be used by business actors for forecasting with the best accuracy. Several business actors have applied forecasting methods to estimate sales [1]. However, the predictions used are often inaccurate and therefore less effective. This has an impact on product accumulation when consumer demand and sales frequency is low, causing storage costs to increase. In addition, when product demand increases but there is a long enough stock out, causing the store to lose sales. To minimize losses due to errors in predicting sales, predictions are needed by utilizing historical sales transaction data using a method to obtain optimal accuracy of prediction results [2].

Authors	▼
Figures	▼
References	▼
Keywords	▼
Metrics	▼

IEEE Personal Account

CHANGE USERNAME/PASSWORD

Purchase Details

PAYMENT OPTIONS
VIEW PURCHASED DOCUMENTS

Profile Information

COMMUNICATIONS PREFERENCES
PROFESSION AND EDUCATION
TECHNICAL INTERESTS

Need Help?

US & CANADA: +1 800 678 4333
WORLDWIDE: +1 732 981 0060
CONTACT & SUPPORT

Follow

f in t

[About IEEE Xplore](#) | [Contact Us](#) | [Help](#) | [Accessibility](#) | [Terms of Use](#) | [Nondiscrimination Policy](#) | [IEEE Ethics Reporting](#) | [Sitemap](#) | [Privacy & Opting Out of Cookies](#)

A not-for-profit organization, IEEE is the world's largest technical professional organization dedicated to advancing technology for the benefit of humanity.

© Copyright 2022 IEEE. All rights reserved.

IEEE websites place cookies on your device to give you the best user experience. By using our websites, you agree to the placement of these cookies. To learn more, read our [Privacy Policy](#).

Accept & Close

IEEE Account

- » [Change Username/Password](#)
- » [Update Address](#)

Purchase Details

- » [Payment Options](#)
- » [Order History](#)
- » [View Purchased Documents](#)

Profile Information

- » [Communications Preferences](#)
- » [Profession and Education](#)
- » [Technical Interests](#)

Need Help?

- » **US & Canada:** +1 800 678 4333
- » **Worldwide:** +1 732 981 0060
- » [Contact & Support](#)

[About IEEE Xplore](#) | [Contact Us](#) | [Help](#) | [Accessibility](#) | [Terms of Use](#) | [Nondiscrimination Policy](#) | [Sitemap](#) | [Privacy & Opting Out of Cookies](#)

A not-for-profit organization, IEEE is the world's largest technical professional organization dedicated to advancing technology for the benefit of humanity.
© Copyright 2022 IEEE - All rights reserved. Use of this web site signifies your agreement to the terms and conditions.

[2021 ISMODE] Your paper #1570783365 ('Forecasting of Sales Based on Long Short Term Memory Algorithm with Hyperparameter')

1 message

2021 ISMODE (ismode@unkris.ac.id) <ismode=unkris.ac.id@edas.info>

Fri, Jan 21, 2022 at 8:08 AM

Reply-To: 2021 ISMODE <ismode@unkris.ac.id>

To: Ali Khumaidi <alikhumaidi@unkris.ac.id>, Ika Nirmala <nirmalaika.renev@gmail.com>

Dear Mr. Ali Khumaidi:

Congratulations - your paper #1570783365 ('Forecasting of Sales Based on Long Short Term Memory Algorithm with Hyperparameter') for 2021 ISMODE has been **accepted** to be presented and published in The 2021 International Seminar on Machine Learning, Optimization, and Data Science (ISMODE) - 2021 ISMODE which will be held in Virtual (Jakarta, Indonesia) during 29th January 2022.

The double-blind review process has already been taken from three reviewers and the results are attached to this email. You have to revise your paper aligned with the review results.

The reviews are below or can be found at [1570783365](#).

Please take some steps below.

1. Please register and make a payment to the conference through the EDAS system. (For Local Participant, please contact our representative)
2. Please download the Camera-Ready of IEEE Full Paper A4 Template from the website. <https://www.ieee.org/conferences/publishing/templates.html>
3. Send the revised full paper in the IEEE PDF eXpress format (see Instructions for IEEE PDF eXpress)
4. Please be aware, according to the IEEE regulation the maximum similarity score has to be less than 30% using i-Thenticate.
5. Log in to EDAS, and fill in the Electronics Copyright Form (ECF) and Presenter.
6. Since the global pandemic, the 2021 ISMODE will be conducted as a VIRTUAL conference (online)

Please email us if you have any questions related to 2021 ISMODE.

Review 1

Technical content and scientific rigour: Is the paper interesting to the expected audience of this conference? Rate the technical content of the paper. (e.g. completeness of the analysis or simulation study, thoroughness of the treatise, accuracy of the models, etc.), its soundness and scientific rigour.

Average (3)

Novelty and originality: Does the paper discuss novel topics, new technology or a new approach to established technology? Rate the novelty and originality of the ideas or results presented in the paper.

Below Average (2)

Quality of presentation: Is the technical content accurate? Rate the paper organization, the clearness of text and figures, the completeness and accuracy of references.

Average (3)

Relevance and timeliness: Will the work have a significant impact on the field or just be an incremental step? Rate the importance and timeliness of the topic addressed in the paper within its area of research.

Below Average (2)

Recommendation: How do you rate your recommendation? You are to score the manuscript.

(Based on this and other indicators, the TPC and publication chair will make the final judgment.)

Likely Reject. (1)

Indicators: The following indicators will help the final judgement of accept/reject.

Length of pages: Is the draft over the allotted maximum of 6 pages in the IEEE template? (or is it below the required minimum of 4 pages for extended abstract?)

Is the length appropriate?

Could be shorter.

Could be longer.

Please Identify specific areas that can be removed.

The length of the paper is sufficient.

English writing quality: This is regarding English writing/Grammar issues.

Is the writing clear enough to convey the meaning?

Grammar issues: This conference does not have the luxury of having staff editors who will collaborate with the authors of accepted papers on the used IEEE template style and organization. So your help is appreciated on this matter.

If there are grammar issues, point out at least a few to the authors so that the authors can check the grammar carefully or have the paper checked by someone else.

Please contact TPC immediately if the grammar issues hinder the prompt review. (TPC may contact the authors to ask for re-submission of the paper after a quick grammar-only fix if the content seems worthwhile. Of course, if the content does not seem to warrant such handling, we may simply reject the paper.)

English is OK; can be further improved, but as is English should not be the main problem of the paper.

Points to stress: Assuming that the paper is ACCEPTED, please list two (2) points (or more if you would like) that are covered in the draft and you would like the presenter to explain in detail.

If you are REJECTING the paper, simply fill in the field with something like "I am rejecting this submission, but EDAS won't let me simply reject it without my writing something in this field. Bah, humbug" Also, please list two (2) points (or more if you would like) that are NOT covered in the draft and you would like the presenter to cover if possible.

Not really recommended for acceptance. The topic is interesting, namely the prediction of sales. It would be interesting to see how the prediction conforms to the actual data. The authors fail to show this. Without this data, there is not much value that can be derived from the paper.

Check list: Optional Check List to help the reviewer

Check list: You may want to use the following checklist during review to come up with the indicator values above and your final judgment.

This checklist was prepared for FULL paper review, but maybe useful for quick judgment of SHORT paper/extended abstract, too.

This is optional, and you don't have to check all of the list items.

Check List of issues for review

Identify and note the type of manuscript (research, tutorial, survey, or case study).

- - The submission is a novel research result, or novel development result, or both,
- - a survey,
- - a tutorial,
- - a case study - including a work-in-progress report.

Motivation/Result:

Is the motivation and result of the topic appropriate and novel for the ISMODE conference?

This is important for the research-type submission.

Soundness

Does the submission contain technically sound and accurate content?

Correct errors and misconceptions.

Comment on the appropriateness of methods, analyses, results, and conclusions.

☐ Appropriateness for ISMODE proceedings

Is the topic discussed appropriate for ISMODE conference?

Note: This may require an understanding of the nature of the ISMODE conference over the years. TPC Chair will make the final decision. If you are new to the ISMODE conference, you may leave the decision on this matter.

☐ Clarity of Discussion

Is the main idea presented clear and well?

Are concepts understandable or defined adequately? Is the discussion easy to follow?

Suggest improvements if possible.

☐ Does this work contain new topics that are not found in the existing works?

This is important for the research-type manuscript.

This may not be that important if the manuscript is a survey.

If the manuscript is a Work-in-Progress report, the point is moot at best.

☐ Overall structure

Pay attention to organization and technical content by commenting on the technical significance and accuracy of the work.

Is the overall structure of the presentation good?

Balance: Does the manuscript lack some elements? Are some topics discussed in too much detail while others are not discussed well enough?

Provide tips that will help the author to organize the material to help the readers to understand the issues presented.

☐ Is the title appropriate?

☐ Does the abstract capture the essence of the submission?

☐ Figures/Tables

Are the captions clear and do they describe the essence of the figures and tables?

☐ References

Does the References section list appropriate papers?

Does the References section list too many papers?

A couple of dozens should suffice usually unless the submission is a survey paper.

In "principle", most references should be from refereed periodicals instead of conference proceedings papers with little peer reviews. (But, of course, this is "principle.")

☐ Text and mathematical formulas

Is text clear and simple?

Are math formulas clear and understandable?

☐ Conclusion/Summary

Is the Summary/Conclusion section of the paper a good summary of what is presented?

Thank you again for your time.

7th

Review 2

Technical content and scientific rigour: Is the paper interesting to the expected audience of this conference? Rate the technical content of the paper. (e.g. completeness of the analysis or simulation study, thoroughness of the treatise, accuracy of the models, etc.), its soundness and scientific rigour.

Average (3)

Novelty and originality: Does the paper discuss novel topics, new technology or a new approach to established technology? Rate the novelty and originality of the ideas or results presented in the paper.

Average (3)

Quality of presentation: Is the technical content accurate? Rate the paper organization, the clearness of text and figures, the completeness and accuracy of references.

Good (4)

Relevance and timeliness: Will the work have a significant impact on the field or just be an incremental step? Rate the importance and timeliness of the topic addressed in the paper within its area of research.

Good (4)

Recommendation: How do you rate your recommendation? You are to score the manuscript.

(Based on this and other indicators, the TPC and publication chair will make the final judgment.)

Possible Accept. (2)

Indicators: The following indicators will help the final judgement of accept/reject.

Length of pages: Is the draft over the allotted maximum of 6 pages in the IEEE template? (or is it below the required minimum of 4 pages for extended abstract?)

Is the length appropriate?

Could be shorter.

Could be longer.

Please Identify specific areas that can be removed.

the length of the paper is appropriate.

English writing quality: This is regarding English writing/Grammar issues.

Is the writing clear enough to convey the meaning?

Grammar issues: This conference does not have the luxury of having staff editors who will collaborate with the authors of accepted papers on the used IEEE template style and organization. So your help is appreciated on this matter.

If there are grammar issues, point out at least a few to the authors so that the authors can check the grammar carefully or have the paper checked by someone else.

Please contact TPC immediately if the grammar issues hinder the prompt review. (TPC may contact the authors to ask for re-submission of the paper after a quick grammar-only fix if the content seems worthwhile. Of course, if the content does not seem to warrant such handling, we may simply reject the paper.)

paper is readable.

Points to stress: Assuming that the paper is ACCEPTED, please list two (2) points (or more if you would like) that are covered in the draft and you would like the presenter to explain in detail.

If you are REJECTing the paper, simply fill in the field with something like "I am rejecting this submission, but EDAS won't let me simply reject it without my writing something in this field. Bah, humbug" Also, please list two (2) points (or more if you would like) that are NOT covered in the draft and you would like the presenter to cover if possible.

Check list: Optional Check List to help the reviewer

Check list: You may want to use the following checklist during review to come up with the indicator values above and your final judgment.

This checklist was prepared for FULL paper review, but maybe useful for quick judgment of SHORT paper/extended abstract, too.

This is optional, and you don't have to check all of the list items.

Check List of issues for review

Identify and note the type of manuscript (research, tutorial, survey, or case study).

- - The submission is a novel research result, or novel development result, or both,
- - a survey,
- - a tutorial,
- - a case study - including a work-in-progress report.

Motivation/Result:

Is the motivation and result of the topic appropriate and novel for the ISMODE conference?

This is important for the research-type submission.

Soundness

Does the submission contain technically sound and accurate content?

Correct errors and misconceptions.

Comment on the appropriateness of methods, analyses, results, and conclusions.

Appropriateness for ISMODE proceedings

Is the topic discussed appropriate for ISMODE conference?

Note: This may require an understanding of the nature of the ISMODE conference over the years. TPC Chair will make the final decision. If you are new to the ISMODE conference, you may leave the decision on this matter.

Clarity of Discussion

Is the main idea presented clear and well?

Are concepts understandable or defined adequately? Is the discussion easy to follow?

Suggest improvements if possible.

Does this work contain new topics that are not found in the existing works?

This is important for the research-type manuscript.

This may not be that important if the manuscript is a survey.

If the manuscript is a Work-in-Progress report, the point is moot at best.

Overall structure

Pay attention to organization and technical content by commenting on the technical significance and accuracy of the work.

Is the overall structure of the presentation good?

Balance: Does the manuscript lack some elements? Are some topics discussed in too much detail while others are not discussed well enough?

Provide tips that will help the author to organize the material to help the readers to understand the issues presented.

Is the title appropriate?

Does the abstract capture the essence of the submission?

Figures/Tables

Are the captions clear and do they describe the essence of the figures and tables?

References

Does the References section list appropriate papers?

Does the References section list too many papers?

A couple of dozens should suffice usually unless the submission is a survey paper.

In "principle", most references should be from refereed periodicals instead of conference proceedings papers with little peer reviews. (But, of course, this is "principle.")

Text and mathematical formulas

Is text clear and simple?

Are math formulas clear and understandable?

Conclusion/Summary

Is the Summary/Conclusion section of the paper a good summary of what is presented?

Thank you again for your time.

10th

Review 3

Technical content and scientific rigour: Is the paper interesting to the expected audience of this conference? Rate the technical content of the paper. (e.g. completeness of the analysis or simulation study, thoroughness of the treatise, accuracy of the models, etc.), its soundness and scientific rigour.

Average (3)

Novelty and originality: Does the paper discuss novel topics, new technology or a new approach to established technology? Rate the novelty and originality of the ideas or results presented in the paper.

Average (3)

Quality of presentation: Is the technical content accurate? Rate the paper organization, the clearness of text and figures, the completeness and accuracy of references.

Average (3)

Relevance and timeliness: Will the work have a significant impact on the field or just be an incremental step? Rate the importance and timeliness of the topic addressed in the paper within its area of research.

Average (3)

Recommendation: How do you rate your recommendation? You are to score the manuscript.

(Based on this and other indicators, the TPC and publication chair will make the final judgment.)

Possible Accept. (2)

Indicators: The following indicators will help the final judgement of accept/reject.

Length of pages: Is the draft over the allotted maximum of 6 pages in the IEEE template? (or is it below the required minimum of 4 pages for extended abstract?)

Is the length appropriate?

Could be shorter.

Could be longer.

Please Identify specific areas that can be removed.

The length is appropriate (6 pages).

English writing quality: This is regarding English writing/Grammar issues.

Is the writing clear enough to convey the meaning?

Grammar issues: This conference does not have the luxury of having staff editors who will collaborate with the authors of accepted papers on the used IEEE template style and organization. So your help is appreciated on this matter.

If there are grammar issues, point out at least a few to the authors so that the authors can check the grammar carefully or have the paper checked by someone else.

Please contact TPC immediately if the grammar issues hinder the prompt review. (TPC may contact the authors to ask for re-submission of the paper after a quick grammar-only fix if the content seems worthwhile. Of course, if the content does not seem to warrant such handling, we may simply reject the paper.)

Sentence writing still has to be improved to make it easier for readers to understand.

Points to stress: Assuming that the paper is ACCEPTED, please list two (2) points (or more if you would like) that are covered in the draft and you would like the presenter to explain in detail.

If you are REJECTing the paper, simply fill in the field with something like "I am rejecting this submission, but EDAS won't let me simply reject it without my writing something in this field. Bah, humbug" Also, please list two (2) points (or more if you would like) that are NOT covered in the draft and you would like the presenter to cover if possible.

1- Add related works to find the gap analysis of the main problems, and the work completed can be seen. 2- Arrange figures and tables so as not to cross the paragraph boundaries of the paper. 3- Add an analysis of the evaluation results obtained to benefit further researchers, not just getting results from the LSTM model.

Check list: Optional Check List to help the reviewer

Check list: You may want to use the following checklist during review to come up with the indicator values above and your final judgment.

This checklist was prepared for FULL paper review, but maybe useful for quick judgment of SHORT paper/extended abstract, too.

This is optional, and you don't have to check all of the list items.

Check List of issues for review

[] Identify and note the type of manuscript (research, tutorial, survey, or case study).

- - The submission is a novel research result, or novel development result, or both,
- - a survey,
- - a tutorial,
- - a case study - including a work-in-progress report.

☐ Motivation/Result:

Is the motivation and result of the topic appropriate and novel for the ISMODE conference?

This is important for the research-type submission.

☐ Soundness

Does the submission contain technically sound and accurate content?

Correct errors and misconceptions.

Comment on the appropriateness of methods, analyses, results, and conclusions.

☐ Appropriateness for ISMODE proceedings

Is the topic discussed appropriate for ISMODE conference?

Note: This may require an understanding of the nature of the ISMODE conference over the years. TPC Chair will make the final decision. If you are new to the ISMODE conference, you may leave the decision on this matter.

☐ Clarity of Discussion

Is the main idea presented clear and well?

Are concepts understandable or defined adequately? Is the discussion easy to follow?

Suggest improvements if possible.

☐ Does this work contain new topics that are not found in the existing works?

This is important for the research-type manuscript.

This may not be that important if the manuscript is a survey.

If the manuscript is a Work-in-Progress report, the point is moot at best.

☐ Overall structure

Pay attention to organization and technical content by commenting on the technical significance and accuracy of the work.

Is the overall structure of the presentation good?

Balance: Does the manuscript lack some elements? Are some topics discussed in too much detail while others are not discussed well enough?

Provide tips that will help the author to organize the material to help the readers to understand the issues presented.

☐ Is the title appropriate?

☐ Does the abstract capture the essence of the submission?

☐ Figures/Tables

Are the captions clear and do they describe the essence of the figures and tables?

☐ References

Does the References section list appropriate papers?

Does the References section list too many papers?

A couple of dozens should suffice usually unless the submission is a survey paper.

In "principle", most references should be from refereed periodicals instead of conference proceedings papers with little peer reviews. (But, of course, this is "principle.")

☐ Text and mathematical formulas

Is text clear and simple?

Are math formulas clear and understandable?

☐ Conclusion/Summary

Is the Summary/Conclusion section of the paper a good summary of what is presented?

Thank you again for your time.

7th

Regards,

ISMODE Admin

2021 International Seminar on Machine Learning, Optimization, and Data Science (ISMODE)

URL: <https://ismode.unkris.ac.id/>

Universitas Krisnadwipayana

Address : Jalan Raya Jatiwaringin, Pondok Gede, Kota Bekasi, Jawa Barat, Indonesia 13077

E-mail: ismode@unkris.ac.id

For Fast Response:

Mr. Ade

WhatsApp: +62 815-7280-9394

<https://wa.me/6281572809394>



#103 (1570783365): Forecasting of Sales Based on Long Short Term Memory Algorithm with Hyperparameter

DATE: **29-30 January 2022**

URL: <https://ismode.unkris.ac.id/>

VIRTUAL Conference

Manuscripts must not contain page numbers, headers or footers. Please use the [A4 template](https://www.ieee.org/conferences/publishing/templates.html) available at <https://www.ieee.org/conferences/publishing/templates.html>

#103 (1570783365): Forecasting of Sales Based on Long Short Term Memory Algorithm with Hyperparameter

BiTeX

Property	Change Add	Value																																
Conference and track		2021 International Seminar on Machine Learning, Optimization, and Data Science (ISMODE) - Full papers																																
Authors		<table border="1"> <thead> <tr> <th>Drag to change order</th> <th>Name</th> <th>ID</th> <th>Edit</th> <th>Flag</th> <th>Affiliation (edit for paper)</th> <th>Email</th> <th>Country</th> </tr> </thead> <tbody> <tr> <td></td> <td>Ali Khumaidi</td> <td>1783335</td> <td></td> <td></td> <td>University of Krisnadwipayana, Indonesia</td> <td>alikhumaidi@unkris.ac.id</td> <td>Indonesia</td> </tr> <tr> <td></td> <td>Ika Nirmala</td> <td>1924417</td> <td></td> <td></td> <td>Universitas Krisnadwipayana, Indonesia</td> <td>nirmalaika.renev@gmail.com</td> <td>Indonesia</td> </tr> <tr> <td></td> <td>Herwanto Herwanto</td> <td>1924276</td> <td>not creator</td> <td></td> <td>Universitas Krisnadwipayana, Indonesia</td> <td>herwanto@unkris.ac.id</td> <td>Indonesia</td> </tr> </tbody> </table>	Drag to change order	Name	ID	Edit	Flag	Affiliation (edit for paper)	Email	Country		Ali Khumaidi	1783335			University of Krisnadwipayana, Indonesia	alikhumaidi@unkris.ac.id	Indonesia		Ika Nirmala	1924417			Universitas Krisnadwipayana, Indonesia	nirmalaika.renev@gmail.com	Indonesia		Herwanto Herwanto	1924276	not creator		Universitas Krisnadwipayana, Indonesia	herwanto@unkris.ac.id	Indonesia
Drag to change order	Name	ID	Edit	Flag	Affiliation (edit for paper)	Email	Country																											
	Ali Khumaidi	1783335			University of Krisnadwipayana, Indonesia	alikhumaidi@unkris.ac.id	Indonesia																											
	Ika Nirmala	1924417			Universitas Krisnadwipayana, Indonesia	nirmalaika.renev@gmail.com	Indonesia																											
	Herwanto Herwanto	1924276	not creator		Universitas Krisnadwipayana, Indonesia	herwanto@unkris.ac.id	Indonesia																											
Title	Only the chairs (2021ismode-chairs@edas.info) can edit	<p><i>Forecasting of Sales Based on Long Short Term Memory Algorithm with Hyperparameter</i></p> <p>Increasingly competitive business competition requires business people to re-design their business strategies, one of which is by applying forecasting methods. Several forecasting techniques have been used in sales prediction research with fairly good accuracy in a short period, the research will focus on optimizing the hyperparameter LSTM algorithm to improve the performance of the model formed over the next 60 days. The method used in this study is the Cross Industry Standard Process for Data Mining (CRISP-DM), in the preprocessing the data cleaning, labeling, summary, and data transformation. The data understanding stage applies the Exploratory Data Analysis method. The development of the LSTM model uses several parameters, namely data partition, number of hidden layers, dropout scenarios to prevent overfitting, number of neurons, epoch describing the number of training iterations, batch size is the amount of training data that must be considered in each process of updating the weights. The experimental results of the best LSTM model after experimenting with different parameters are hyperparameter batch size 30, epoch 150, 3 hidden layers and 3 dropouts, resulting in RMSE training of 0.0855 and RMSE testing of 0.0846.</p>																																
Abstract	Only the chairs (2021ismode-chairs@edas.info) can edit																																	
Keywords	Only the chairs (2021ismode-chairs@edas.info) can edit	Forecasting; Hyperparameter; LSTM; Product Sales																																
Topics		Big Data and Machine Learning Applications and Experiences																																
Presenter(s)		Ali Khumaidi (bio)																																
Registration		Ali Khumaidi has registered and paid for Batch 3:X-paper																																
Session		2B: <i>Parallel Session 2B</i> from Sat, January 29, 2022 09:30 WIB until 11:30 (5th paper) in Room B (15 min.)																																

DOI	Only the chairs (2021ismode- chairs@edas.info) can edit											
URL	Only the chairs (2021ismode- chairs@edas.info) can edit											
Status		Published										
Copyright form		IEEE; IEEE: Feb 10, 2022 07:46 Asia/Pontianak										
Visa letter contact		ISMODE admin request at https://ismode.unkris.ac.id/										
Review manuscript		However, authors cannot upload: paper status										
		<table border="0"> <thead> <tr> <th>Document (show)</th> <th>Pages</th> <th>File size</th> <th>Changed</th> <th>Similarity rating </th> </tr> </thead> <tbody> <tr> <td> Document (show)</td> <td>6</td> <td>768,000</td> <td>Dec 29, 2021 15:34 Asia/Pontianak </td> <td>10</td> </tr> </tbody> </table>	Document (show)	Pages	File size	Changed	Similarity rating 	 Document (show)	6	768,000	Dec 29, 2021 15:34 Asia/Pontianak 	10
Document (show)	Pages	File size	Changed	Similarity rating 								
 Document (show)	6	768,000	Dec 29, 2021 15:34 Asia/Pontianak 	10								
Final (accepted) manuscript / PDF must be submitted to PDF eXpress	Could upload until Jan 29, 2022 23:58 Asia/Pontianak .	However, authors cannot upload: final deadline										
		<table border="0"> <thead> <tr> <th>Document (show)</th> <th>Pages</th> <th>File size</th> <th>Changed</th> </tr> </thead> <tbody> <tr> <td> Document (show)</td> <td>6</td> <td>390,078</td> <td>Jan 26, 2022 13:29 Asia/Pontianak </td> </tr> </tbody> </table>	Document (show)	Pages	File size	Changed	 Document (show)	6	390,078	Jan 26, 2022 13:29 Asia/Pontianak 		
Document (show)	Pages	File size	Changed									
 Document (show)	6	390,078	Jan 26, 2022 13:29 Asia/Pontianak 									
Presentation	Could upload until Jan 29, 2022 23:58 Asia/Pontianak .	However, authors cannot upload: presentation deadline										
Stamped for attendee proceedings		However, authors cannot upload:										
		<table border="0"> <thead> <tr> <th>Document (show)</th> <th>Pages</th> <th>File size</th> <th>Changed</th> </tr> </thead> <tbody> <tr> <td> Document (show)</td> <td>6 (201...206)</td> <td>385,547</td> <td>Mar 8, 2022 17:58 Asia/Pontianak </td> </tr> </tbody> </table>	Document (show)	Pages	File size	Changed	 Document (show)	6 (201...206)	385,547	Mar 8, 2022 17:58 Asia/Pontianak 		
Document (show)	Pages	File size	Changed									
 Document (show)	6 (201...206)	385,547	Mar 8, 2022 17:58 Asia/Pontianak 									
Stamped for IEEE Xplore		<table border="0"> <thead> <tr> <th>Document (show)</th> <th>Pages</th> <th>File size</th> <th>Changed</th> </tr> </thead> <tbody> <tr> <td> Document (show)</td> <td>6 (201...206)</td> <td>382,335</td> <td>Mar 8, 2022 17:58 Asia/Pontianak </td> </tr> </tbody> </table>	Document (show)	Pages	File size	Changed	 Document (show)	6 (201...206)	382,335	Mar 8, 2022 17:58 Asia/Pontianak 		
Document (show)	Pages	File size	Changed									
 Document (show)	6 (201...206)	382,335	Mar 8, 2022 17:58 Asia/Pontianak 									

Personal notes



You are the creator and an author for this paper.

Reviews

3 Reviews

Review 1

Technical content and scientific rigour	Novelty and originality	Quality of presentation	Relevance and timeliness	Recommendation	Check list
Average (3)	Below Average (2)	Average (3)	Below Average (2)	Likely Reject. (1)	7th

Length of pages (Is the draft over the allotted maximum of 6 pages in the IEEE template? (or is it below the required minimum of 4 pages for extended abstract?))

Is the length appropriate?

Could be shorter.

Could be longer.

Please Identify specific areas that can be removed.)

The length of the paper is sufficient.

English writing quality (This is regarding English writing/Grammar issues.

Is the writing clear enough to convey the meaning?

Grammar issues: This conference does not have the luxury of having staff editors who will collaborate with the authors of accepted papers on the used IEEE template style and organization. So your help is appreciated on this matter.

If there are grammar issues, point out at least a few to the authors so that the authors can check the grammar carefully or have the paper checked by someone else.

Please contact TPC immediately if the grammar issues hinder the prompt review. (TPC may contact the authors to ask for re-submission of the paper after a quick grammar-only fix if the content seems worthwhile. Of course, if the content does not seem to warrant such handling, we may simply reject the paper.)

English is OK; can be further improved, but as is English should not be the main problem of the paper.

Points to stress (Assuming that the paper is ACCEPTED, please list two (2) points (or more if you would like) that are covered in the draft and you would like the presenter to explain in detail.

If you are REJECTING the paper, simply fill in the field with something like "I am rejecting this submission, but EDAS won't let me simply reject it without my writing something in this field. Bah, humbug" Also, please list two (2) points (or more if you would like) that are NOT covered in the draft and you would like the presenter to cover if possible.)

Not really recommended for acceptance. The topic is interesting, namely the prediction of sales. It would be interesting to see how the prediction conforms to the actual data. The authors fail to show this. Without this data, there is not much value that can be derived from the paper.



Review 2

Technical content and scientific rigour

Average (3)

Novelty and originality

Average (3)

Quality of presentation

Good (4)

Relevance and timeliness

Good (4)

Recommendation

Possible Accept. (2)

Check list

10th

Length of pages (Is the draft over the allotted maximum of 6 pages in the IEEE template? (or is it below the required minimum of 4 pages for extended abstract?))

Is the length appropriate?

Could be shorter.

Could be longer.

Please Identify specific areas that can be removed.)

the length of the paper is appropriate.

English writing quality (This is regarding English writing/Grammar issues.

Is the writing clear enough to convey the meaning?

Grammar issues: This conference does not have the luxury of having staff editors who will collaborate with the authors of accepted papers on the used IEEE template style and organization. So your help is appreciated on this matter.

If there are grammar issues, point out at least a few to the authors so that the authors can check the grammar carefully or have the paper checked by someone else.

Please contact TPC immediately if the grammar issues hinder the prompt review. (TPC may contact the authors to ask for re-submission of the paper after a quick grammar-only fix if the content seems worthwhile. Of course, if the content does not seem to warrant such handling, we may simply reject the paper.)

paper is readable.



Review 3

Technical content and scientific rigour

Average (3)

Novelty and originality

Average (3)

Quality of presentation

Average (3)

Relevance and timeliness

Average (3)

Recommendation

Possible Accept. (2)

Check list

7th

Length of pages (Is the draft over the allotted maximum of 6 pages in the IEEE template? (or is it below the required minimum of 4 pages for extended abstract?))

Is the length appropriate?

Could be shorter.

Could be longer.

Please Identify specific areas that can be removed.)

The length is appropriate (6 pages).

English writing quality (This is regarding English writing/Grammar issues.

Is the writing clear enough to convey the meaning?

Grammar issues: This conference does not have the luxury of having staff editors who will collaborate with the authors of accepted papers on the used IEEE template style and organization. So your help is appreciated on this matter.

If there are grammar issues, point out at least a few to the authors so that the authors can check the grammar carefully or have the paper checked by someone else.

Please contact TPC immediately if the grammar issues hinder the prompt review. (TPC may contact the authors to ask for re-submission of the paper after a quick grammar-only fix if the content seems worthwhile. Of course, if the content does not seem to warrant such handling, we may simply reject the paper.)

Sentence writing still has to be improved to make it easier for readers to understand.

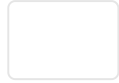
Points to stress (Assuming that the paper is ACCEPTED, please list two (2) points (or more if you would like) that are covered in the draft and you would like the presenter to explain in detail.

If you are REJECTing the paper, simply fill in the field with something like "I am rejecting this submission, but EDAS won't let me simply reject it without my writing something in this field. Bah, humbug" Also, please list two (2) points (or more if you would like) that are NOT covered in the draft and you would like the presenter to cover if possible.)

- 1- Add related works to find the gap analysis of the main problems, and the work completed can be seen.
- 2- Arrange figures and tables so as not to cross the paragraph boundaries of the paper.
- 3- Add an analysis of the evaluation results obtained to benefit further researchers, not just getting results from the LSTM model.



EDAS at alpha for 103.195.58.75 (Sat, 27 Aug 2022 17:08:59 +0700 WIB) [User 1783335 using Win10:Chrome 104.0 0.410/4.682 sj [Request help](#)]



Conferences and journals containing my papers

All papers from conferences or journals are shown, but you can also restrict this to [conferences or journal issues that have not ended](#). Dates listed are deadlines for submitting manuscripts for registered papers. You can only upload papers that have at least one author.

Conference	Paper title (details)	Status	Edit	Add and delete authors	Withdraw	Session	Final (accepted) manuscript / PDF must be submitted to PDF eXpress	presentation
ICOSICA 2020	<i>Design of Smart System for Fruit Packinghouse Management in Supply Chain</i>	Accepted				P6: Computer System and Networks & Software Engineering and Information Systems from Thu, September 17, 2020 13:00 WIB until 15:20 (6th paper) in Parallel 6 (20 min.)		
2021 ISMODE	<i>Quiz Generation using Genetic Algorithm with OX1 Crossover and Twors Mutation</i>	Rejected						
2021 ISMODE	<i>Feature Extraction and Classification of Tissue Mammograms Based on Grayscale and Gray Level Co-occurrence Matrix</i>	Published				1C: Parallel Session 1C from Sat, January 29, 2022 07:30 WIB until 09:30 (8th paper) in Room C (15 min.)		
2021	<i>Forecasting of Sales Based on</i>	Published				2B: Parallel Session 2B from Sat,		

ISMODE *Long Short Term Memory
Algorithm with
Hyperparameter
Implementation of Genetic
2021 Algorithm with OX1 Crossover
ISMODE and Twors Mutation for Quiz
Generation*

Rejected

January 29, 2022 09:30 WIB until
11:30 (5th paper) in Room B (15
min.)

ISMODE

Jakarta - Indonesia,
29 January
2022



ismode.unkris.ac.id



UNIVERSITAS
KRISNADWIPAYANA



The 1st 2021 International Seminar on Machine Learning, Optimization, & Data Science

Certificate

This certificate is presented to

ALI KHUMAIDI

Universitas Krisnadwipayana
As *PRESENTER* of Paper Entitled

Forecasting of Sales Based on Long Short Term Memory Algorithm with Hyperparameter

For outstanding contribution in The 1st 2021 International Seminar on Machine Learning, Optimization, & Data Science (ISMODE)

Organized by Faculty of Engineering, Universitas Krisnadwipayana Jakarta, Indonesia

Jakarta - Indonesia, 29 January 2022

Dean of the Faculty of Engineering,



Dr. Harjono Padmono Putro, ST, M.Kom

Forecasting of Sales Based on Long Short Term Memory Algorithm with Hyperparameter

1st Ali Khumaidi
Faculty of Engineering
Universitas Krisnadwipayana
Jakarta, Indonesia
alikhumaidi@unkris.ac.id

2nd Ika Ayu Nirmala
Faculty of Engineering
Universitas Krisnadwipayana
Jakarta, Indonesia
nirmalaika.renev@gmail.com

3rd Herwanto
Faculty of Engineering
Universitas Krisnadwipayana
Jakarta, Indonesia
herwanto@unkris.ac.id

Abstract— Increasingly competitive business competition requires business people to re-design their business strategies, one of which is by applying forecasting methods. Several forecasting techniques have been used in sales prediction research with fairly good accuracy in a short period, the research will focus on optimizing the hyperparameter LSTM algorithm to improve the performance of the model formed over the next 60 days. The method used in this study is the Cross Industry Standard Process for Data Mining (CRISP-DM), in the preprocessing the data cleaning, labeling, summary, and data transformation. The data understanding stage applies the Exploratory Data Analysis method. The development of the LSTM model uses several parameters, namely data partition, number of hidden layers, dropout scenarios to prevent overfitting, number of neurons, epoch describing the number of training iterations, batch size is the amount of training data that must be considered in each process of updating the weights. The experimental results of the best LSTM model after experimenting with different parameters are hyperparameter batch size 30, epoch 150, 3 hidden layers and 3 dropouts, resulting in RMSE training of 0.0855 and RMSE testing of 0.0846.

Keywords—Forecasting, Hyperparameter, LSTM, Next 60 days, Product Sales

I. INTRODUCTION

Business actors are currently faced with the challenge of increasingly competitive business competition, which requires every business actor to re-design his business strategy in order to meet market demand. The industrial revolution 4.0 and the development of machine learning can be used by business actors for forecasting with the best accuracy. Several business actors have applied forecasting methods to estimate sales [1]. However, the predictions used are often inaccurate and therefore less effective. This has an impact on product accumulation when consumer demand and sales frequency is low, causing storage costs to increase. In addition, when product demand increases but there is a long enough stock out, causing the store to lose sales. To minimize losses due to errors in predicting sales, predictions are needed by utilizing historical sales transaction data using a method to obtain optimal accuracy of prediction results [2].

Previous research related to sales forecasting has been carried out, Long Short Term Memory (LSTM) is able to predict fluctuating demand well and outperform exponential smoothing (ETS), K-nearest neighbor (KNN), autoregressive integrated moving average (ARIMA), support vector machine (SVM) and network artificial nerves (ANN) [3][4]. Forecasting agricultural commodity prices with the LSTM model is superior to the Holt-Winter's Seasonal method and the SARIMA model with an evaluation based on the RMSE

value [5]. Forecasting dependence on electricity demand using LSTM shows better results than traditional methods (SARIMA, ARMA and ARMAX) using MAPE and RMSE [6]. LSTM has excellent performance in modeling customer behavior in a fairly complex environment [7]. Prediction of sales at 1,150 stores in Germany, using the comparison of the Extreme Gradient Boosting (XGB) and Random Forest (RFR) algorithms with LSTM. The results showed that LSTM has 12-14% better accuracy than XGB and RFR [8]. The studies that have been carried out show that LSTM algorithm has a fairly good accuracy for making predictions.

Based on previous studies in the field of sales forecasting, quite a lot has been done with the aim of determining the best-selling product using a certain algorithm or comparing certain algorithms. This research will focus on predicting the number of products sold in the future by optimizing the hyperparameter LSTM algorithm to improve the performance of the model formed over the next 60 days..

II. MATERIAL AND METHOD

A. Dataset

The data source used in this study is the report on sales of Ciwo Pet Shop products from January 2018 to March 2020. The data consists of sales data in one marketplace (Tokopedia) and offline sales in stores. Sample data can be seen in Figure 1.

	Date	Customer	Invoice	City	Product	Quantity	Price
0	01/01/2018	Tilar Handayani	INV/20180101/XXVIII/126179649	Jakarta Timur	MAKANAN KUCING WHISKAS SACHET - WHISKAS BASAH ...	35.0	4350.0
1	01/01/2018	Tilar Handayani	INV/20180101/XXVIII/126180557	Jakarta Timur	MAKANAN KUCING WHISKAS SACHET - WHISKAS BASAH ...	35.0	4350.0
2	01/01/2018	Ika Kurniawati	INV/20180101/XXVIII/126163178	Kota Bekasi	PET CARGO KUCING ANJING KELINCI MUSANG LANDAK ...	1.0	160000.0
3	01/01/2018	Agung Darmawan	INV/20180101/XXVIII/126180935	Jakarta Selatan	PASIR KUCING WANGI GUMPAL 25 LITER	1.0	83000.0
4	01/01/2018	Asti	INV/20180101/XXVIII/126214321	Kota Bekasi	PASIR KUCING GUMPAL WANGI KAWAN 10L 10 LITER	1.0	48000.0
...
140948	31/03/2020	Duta Wiryanto	INV/20200331/XXIII/512250603	Kota Yogyakarta	PASIR KUCING WANGI GUMPAL 25 LITER	3.0	67000.0
140949	31/03/2020	Taguh Triono	INV/20200331/XXIII/512231140	Kota Bekasi	PASIR KUCING WANGI GUMPAL 25 LITER	1.0	67000.0
140950	31/03/2020	Marcellus Adrian	INV/20200331/XXIII/511823299	Kota Bekasi	PASIR KUCING WANGI GUMPAL 25 LITER	1.0	67000.0
140951	31/03/2020	Tjehjadi Widjaja	INV/20200331/XXIII/511370148	Jakarta Barat	REPACK ORI CAT FOOD ORICAT 1KG SEJENIS BOLT MA...	3.0	17000.0
140952	31/03/2020	Dito Ardianto	INV/20200331/XXIII/511892475	Kab. Tangerang	GUNTING KUKU HEWAN ANJING KUCING SUGAR GLIDIER ...	1.0	15000.0

Fig. 1. Sample of sales data transaction

B. Research Stages

The method used in this research is Cross Industry Standard Process for Data Mining (CRISP-DM) which is a standard process for problem solving in research units in the field of data mining [9]. The purpose of the research methodology is for the implementation of the research to obtain results that are in accordance with the objectives to be

achieved. The series of stages in this research include: Data understanding and preparation, modeling and evaluation.

1) Data preparation

The data preparation stage or data preprocessing includes all activities to build the final dataset from raw data to set up data mining. This stage can be done repeatedly to get the appropriate data [10]. This stage includes the following processes:

a) **Cleaning Data:** Adjusting the existing data format as needed, eliminating missing values and unneeded data.

b) **Construct Data:** Preparation before completing the dataset, at this stage it can be updated or created a new record or attribute. Because the data in this study is very varied, a labeling process is carried out to give ID to each type of product and the name of the buyer at random.

c) **Data Transformation:** This stage is a way of normalizing the data to equalize the format in the form of a general scale with a range of 0 to 1. In this study, the Min-MaxScaler method will be used.

2) Modelling and evaluation

The modeling process can be seen in Figure 2. Consists of 7 processes as follows:

a) **Input Data:** The data input stage is the stage of entering the pre-processed data into the model scenario that will be tested.

b) **Input Hyperparameter:** This stage is the process of setting the parameter scenario in order to produce the right parameters so that the LSTM algorithm can study the patterns contained in the data properly [11]. The stages in performing the hyperparameter input can be seen in Table 1.

TABLE I. PARAMETER TEST STAGES

Stage	Parameter
1	Data Composition
2	Hidden Layer
3	Dropout Scenario
4	Batch Size
5	Epoch

At the initial stage, it is necessary to test the composition of training and testing that produces the smallest loss. After obtaining the appropriate composition, the results of the experiment are used to find the best hidden layer. If the number of hidden layers has resulted in the smallest loss, the next step is to create a dropout scenario. Dropout serves to prevent data from being overfitted. If the number of dropouts has resulted in a small error, a data partition with the appropriate layer will be obtained. Next is the determination of the best batch size and epoch based on the data composition and layers that have been determined.

c) **Training:** At this stage, the application of machine learning-based prediction trials, namely the LSTM algorithm, can be implemented on the training data. The training process aims to provide clues to the data through algorithms so that they can learn from the given data patterns and look for correlations.

d) **Model, Training Loss and Validation Loss:** At this stage the results of the hyperparameter tuning configuration will be displayed with the results in the form of training loss and validation loss values. The results of the training and validation loss are a representation of how well the resulting model is with the test parameter in the form of the Root Mean Square Error (RMSE).

e) **Model evaluation:** After going through a series of processes, it is necessary to evaluate the performance of the model using the calculation of RMSE is an alternative method used to measure the accuracy of the forecasting technique used [12]. RMSE is the mean absolute difference between the forecasted and actual values presented in the form of a percentage.

f) **60 Days Future Forecasting:** The prediction stage is a process to predict a value for the future based on a certain pattern in the data. In this study, predictions are made to estimate sales in the next year. The results of the prediction process will then be recommended to be used as a decision-making tool.

g) **Denormalization:** After getting the prediction results from the prediction process, then the data is denormalized, that is, the data is converted into real values again [13]. Because the data is still in the form of a range of intervals that have previously been normalized data. The purpose of denormalization is to make it easier to read the resulting output value. The formula for denormalizing: $d = d'(\max - \min) + \min$.

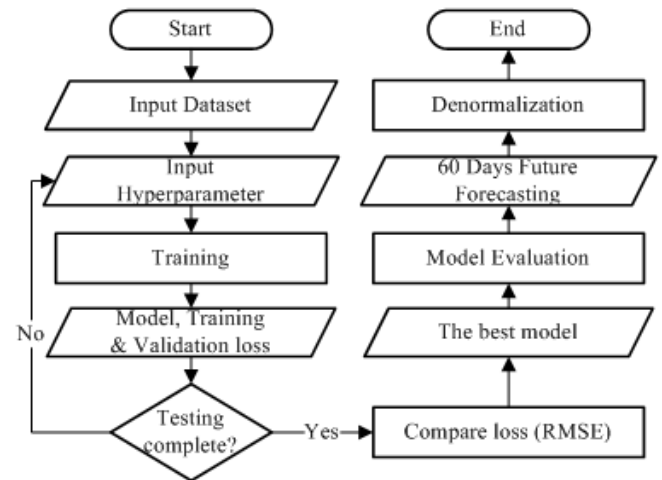


Fig. 2. Flowchart of modelling

III. RESULT AND DISCUSSION

A. Data Preprocessing

Data cleaning is a method to delete unnecessary data and fill in missing data. In this study, the data used were first identified as missing columns in the table. After that, the correlation between the missing tables was checked, which can be seen in Figure 3.

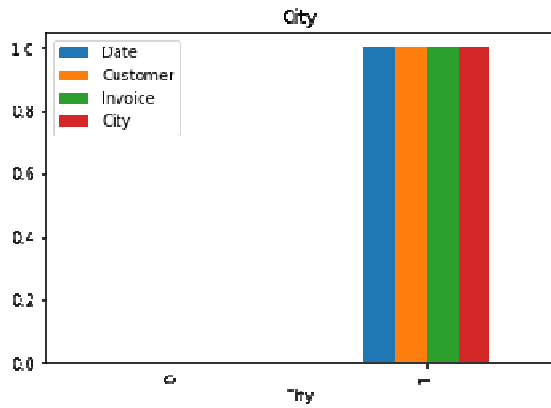


Fig. 3. Missing Value Correlation Chart

Based on the results of the bar plot visualization, it shows that the missing values between columns are related to each other. After reviewing the available datasets, it is necessary to forward fill in the NaN (Not a Number) line and delete transactions without invoice numbers.

Labeling is a way of randomly assigning IDs to product and customer categories to make it easier to define in numeric form. Summary of the number of sales in a daily format to simplify the modeling process so that the algorithms used can learn patterns better. Summary results can be seen in Figure 4.

	Date	Price	Quantity	Total
0	2018-01-01	1190200.0	92.0	1781500.0
1	2018-01-02	1830100.0	126.0	2949200.0
2	2018-01-03	4405100.0	165.0	5513300.0
3	2018-01-04	5931450.0	327.0	8161250.0
4	2018-01-05	3536400.0	273.0	5148500.0
...
814	2020-03-27	14485200.0	760.0	23278600.0
815	2020-03-28	16073000.0	667.0	25065300.0
816	2020-03-29	15537100.0	577.0	23371700.0
817	2020-03-30	11885683.0	746.0	21249710.0
818	2020-03-31	12882950.0	627.0	22781750.0

819 rows × 4 columns

Fig. 4. Summary Results Total Sales Per Day

Data transformation is a way of normalizing data that serves to equalize the format in the form of a general scale (0-1). In this study, the Min-MaxScaler method was used for data modeling [14]. The sample of normalization results can be seen in Table 2.

TABLE II. SAMPLE OF NORMALIZATION RESULTS

Date	Quantity	X'
01/01/2018	92	0,00613079
02/01/2018	126	0,01771117
03/01/2018	165	0,03099455
04/01/2018	327	0,08617166
05/01/2018	273	0,06777929

06/01/2018	488	0,14100817
07/01/2018	372	0,10149863
08/01/2018	575	0,17064032
09/01/2018	426	0,11989109
10/01/2018	327	0,08617166

B. Data understanding

The data understanding stage can provide an analytical foundation for a study by making a summary and identifying potential problems contained in the data before modeling. The data understanding stage applies the Exploratory Data Analysis (EDA) method, namely data exploration techniques using simple arithmetic techniques and graphic techniques in summarizing observational data to facilitate data understanding [15]. The results of the EDA can be seen in Figure 5. The results of the distribution of the data show that there is a difference in the amount between the median (50%) and the mean with a significant difference so that it can be concluded that the number of transactions between buyers is very diverse. Based on the results of exploration, the types of products are very diverse with a total of 1,523 product variations. The results of city distribution exploration based on purchase frequency show that East Jakarta has the highest purchase frequency compared to 266 cities or other regions. Figure 6 explains the results of data exploration showing that sales tend to fluctuate with the assumption that the highest sales are in the cities of Bekasi and East Jakarta and experienced a significant increase in October 2019.

	Quantity	Price	ProductID	CustomerID	Total
count	140953.000000	1.409530e+05	140953.000000	140953.000000	1.409530e+05
mean	4.491980	8.250755e+04	735.295198	13093.044575	1.260052e+05
std	15.581414	1.505750e+05	386.411018	7450.191321	2.350766e+05
min	1.000000	1.000000e+02	0.000000	0.000000	1.000000e+02
25%	1.000000	1.400000e+04	483.000000	6675.000000	2.500000e+04
50%	1.000000	2.500000e+04	731.000000	12959.000000	6.750000e+04
75%	3.000000	7.800000e+04	927.000000	19464.000000	1.360000e+05
max	3000.000000	8.550000e+06	1522.000000	26554.000000	1.800000e+07

Fig. 5. Summary Results Total Sales Per Day

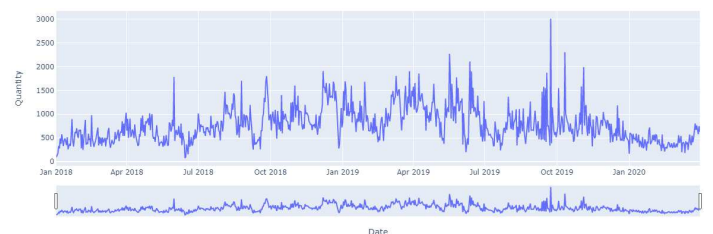


Fig. 6. Summary Results Total Sales Per Day

C. Modelling

In develop LSTM model, several parameters are used including data partitioning, number of hidden layers, dropout scenarios to prevent overfitting, number of neurons, epoch describing the number of training iterations, batch size is the amount of training data that must be considered for each process of updating the weights. To get the best results from the LSTM model, the training process will use different parameters to get the best results. From a number of models produced will be compared and analyzed from

each loss and RMSE values generated each time the experiment. The provisions of the parameter values used for making the LSTM model can be seen in Table 3. Tests will be carried out on each parameter in Table 1, where the results of parameter testing that have produced a fairly good loss will be used for the next test so that it is expected to produce the best model.

TABLE III. PARAMETER OF LSTM TESTING

Parameter	Quantity	Description
Input	3	Daily Total Sales Data
Hidden Layer	Trial Error	30 - 120 neuron
Dropout	Trial Error	1 - 3 layer
Epoch	Trial Error	50 - 200
Batch Size	Trial Error	10 - 400
Optimizer	1	Adam
Output	1	Number of product sales per day

In the first experiment, experiments were carried out to obtain the optimal composition of the data. The hyperparameters used to find the amount of data composition are 30 Batch Size and 100 Epoch and use the Adam optimizer. Based on the experimental results, the results are shown in Table 4. Based on the experimental results, the losses obtained in tests 1 and 2 are categorized as overfitting because the training loss is smaller than the validation loss. While in experiments 3 to 5 it is categorized as underfitting because the training loss is greater than the validation loss. To get the optimal model from the results of this first experiment, it is taken from the smallest difference between the RMSE Training and RMSE Testing values. Based on the first test, the optimal amount of data composition from the dataset being trained lies in the third experiment with a value of 0.0913 for RMSE Training and 0.0858 for RMSE Testing. As for the amount of data composition that is less than optimal, it is in the fourth experiment with a value of 0.9638 for RMSE Training and 0.0714 for RMSE Testing.

TABLE IV. RESULTS OF DATA PARTITION TESTING

Training	Testing	Loss	Val Loss	RMSE	
		(MSE)	(MSE)	Training	Testing
50	50	0,0078	0,0120	0,0802	0,1094
60	40	0,0077	0,0115	0,0844	0,1070
65	35	0,0092	0,0074	0,0913	0,0858
70	30	0,0093	0,0051	0,9638	0,0714
80	20	0,0106	0,0058	0,1028	0,0760

After getting the results of the first test, stage 2 testing was carried out to get the optimal hidden layer. Phase 2 testing is carried out with Batch size 30, Epoch 100 and data composition of 65:35 which is the result of the first test. The test results to find the hidden layer can be seen in Table 5. Based on the experimental results, the loss value obtained in tests 2 to 5 tends to be overfitting because this value is smaller than the validation loss value. To get the optimal model from the experimental results, it can be seen from the loss and validation loss values which have a small difference, supported by the RMSE Train and RMSE Testing values which also have the smallest difference.

Based on the test results, in this study the addition of the number of hidden layers does not really have a significant effect on reducing a test parameter value. This is evidenced by the increase in the loss value generated in the 2nd to 5th experiments in the table above. From the results of this test, the optimal number of hidden layers from the dataset that has been trained is on the hidden 3 neurons with an RMSE Training value of 0.0910 and an RMSE Testing of 0.0889. As for the number of hidden layers that are less than optimal, it is in the 5th experiment with the number of hidden layers 7. After doing the second stage of testing, the third stage of testing is carried out to get the best dropout scenario. Dropout serves to prevent overfitting that is too large. The third stage of testing was carried out using batch size 50, epoch 100, data composition 60:35 based on the results of the first test and the number of hidden layers 3 based on the results of the second test.

TABLE V. RESULTS OF HIDDEN LAYER TESTING

Hidden layer	Loss	Val Loss	RMSE	
	(MSE)	(MSE)	Training	Testing
3	0,0078	0,0120	0,0802	0,1094
4	0,0077	0,0115	0,0844	0,1070
5	0,0092	0,0074	0,0913	0,0858
6	0,0093	0,0051	0,9638	0,0714
7	0,0106	0,0058	0,1028	0,0760

The results of the third experiment can be seen in Table 6. Based on the test results, it shows that as the number of dropouts increases, the resulting value tends to rise and fall, so it can be concluded that the addition of the dropout value does not have a significant effect if it exceeds the predetermined number of hidden layers. In the second experiment the loss training value tends to increase, but the validation value tends to decrease. Meanwhile, in the third test, the training loss value tends to decrease and the validation loss value tends to increase. At this stage to determine the optimal dropout value by comparing the value of the RMSE Training and RMSE Testing results which have the smallest difference in each test. Based on the results at this stage, the optimal dropout value lies in the third test with an RMSE Training value of 0.0906 and an RMSE Testing of 0.0895. After doing the third stage of testing, then the fourth stage of testing is carried out to get the best batch size value. The fourth stage of testing was carried out using batch size 50, epoch 100, data composition 60:35 based on the results of the first test and the number of hidden layers 3 based on the results of the second test and 3 the number of dropouts based on the third test.

TABLE VI. RESULTS OF DROPOUT SCENARIO TESTING

Dropout	Loss	Val Loss	RMSE	
	(MSE)	(MSE)	Training	Testing
1	0,0097	0,0073	0,0857	0,0941
2	0,0102	0,0067	0,1021	0,0821
3	0,0091	0,0080	0,0906	0,0895

The results of the fourth experiment can be seen in Table 7. Based on the test results, the addition of the batch size value tends to produce loss values that tend to go up and

down. So it can be concluded that there are no special provisions for the best batch size value. This is because each data has its own treatment in determining the right batch size. At this stage to determine the optimal batch size value by comparing the value of the RMSE Training and RMSE Testing results which have the smallest difference in each test. Based on the results at this stage, the optimal batch size value lies in the fifth test with an RMSE Training value of 0.0914 and an RMSE Testing of 0.0879. After doing the third stage of testing, then the fifth stage of testing is carried out to get the best epoch value. The fifth stage of testing is carried out using the composition of data 60:35 based on the results of the first test and the number of hidden layers 3 based on the results of the second test and 3 the number of dropouts based on the third test and a batch size of 30 based on the results of the fourth stage of testing.

TABLE VII. RESULTS OF HIDDEN LAYER TESTING

Batch Size	Loss	Val Loss	RMSE	
	(MSE)	(MSE)	Training	Testing
10	0,0088	0,0073	0,9031	0,0856
15	0,0086	0,0069	0,0898	0,0829
20	0,0079	0,0064	0,0899	0,0801
25	0,0092	0,0070	0,0911	0,0838
30	0,0097	0,0077	0,0914	0,0879
35	0,0087	0,0068	0,0905	0,0824
40	0,0094	0,0069	0,0926	0,0832

The results of the fifth experiment can be seen in table 8 above. Based on the test results show that the increasing number of epochs, the resulting value tends to fluctuate, so it can be concluded that the determination of the best number of epochs to reduce the amount of loss is based on trials. This is because each data has a different pattern and complexity. At this stage to determine the optimal epoch value by comparing the value of the RMSE Training and RMSE Testing results which have the smallest difference in each test. Based on the results at this stage, the optimal batch size value lies in the third test with an RMSE Training value of 0.0855 and an RMSE Testing of 0.0844.

TABLE VIII. RESULTS OF EPOCH TESTING

Epoch	Loss	Val Loss	RMSE	
	(MSE)	(MSE)	Training	Testing
50	0,0111	0,0077	0,0977	0,0878
80	0,0096	0,0067	0,0997	0,0816
100	0,0087	0,0074	0,0881	0,0860
120	0,0079	0,0089	0,0856	0,0943
150	0,0076	0,0071	0,0855	0,0844
180	0,0087	0,0090	0,0898	0,0949
200	0,0076	0,0095	0,0837	0,0974

Prediction by determining the hyperparameters for the best model that has been obtained in the testing process, namely by using the LSTM algorithm with the modeling architecture in Figure 7 and the results of sales predictions with the LSTM algorithm can be seen in Figure 8. The results are in the form of comparisons between actual data and data from training and testing predictions.

```

Model: "sequential"
-----
Layer (type)                Output Shape         Param #
-----
lstm (LSTM)                  (None, 100, 100)    40800
dropout (Dropout)           (None, 100, 100)    0
lstm_1 (LSTM)                (None, 100, 100)    80400
dropout_1 (Dropout)         (None, 100, 100)    0
lstm_2 (LSTM)                (None, 100)         80400
dropout_2 (Dropout)         (None, 100)         0
dense (Dense)                (None, 1)           101
-----
Total params: 201,701
Trainable params: 201,701
Non-trainable params: 0

```

Fig. 7. LSTM Layer Architecture

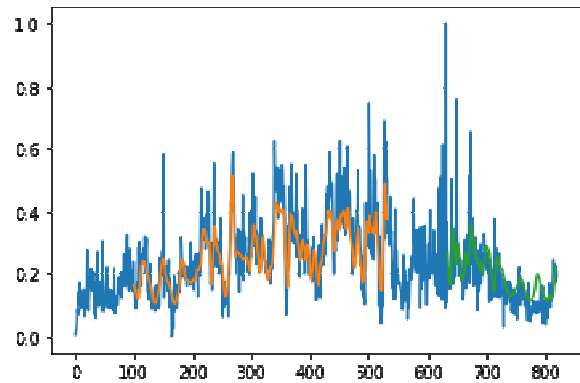


Fig. 8. Chart of Prediction Result

D. Evaluation

After getting the results of the sales prediction, the model accuracy will be calculated using RMSE. The results of the training sample and prediction testing are presented in Tables 9 and 10.

TABLE IX. SAMPLE OF TRAINING DATA RESULTS

y_train	train_predict	Error	Absolute Value of Error	Square of Error
		Y - Y'	Y-Y'	(Y-Y') ²
0,2411	0,1632	0,0779	0,0779	0,00607
0,1685	0,1588	0,0097	0,0097	9,592E-05
0,1433	0,1541	-0,0107	0,0107	0,0001
0,1158	0,1475	-0,0317	0,0317	0,0010
0,0875	0,1393	-0,0517	0,0517	0,0026

TABLE X. SAMPLE OF TRAINING DATA RESULTS

y_test	test_predict	Error	Absolute Value of Error	Square of Error
		Y - Y'	Y-Y'	(Y-Y') ²
0,2731	0,2704	0,0027	0,00275	7,611E-06
0,1927	0,2394	-0,0466	0,0466	0,0021
0,1651	0,2068	-0,0416	0,0416	0,0017
0,1863	0,1796	0,0066	0,0066	4,487E-05
0,1495	0,1654	-0,0158	0,0158	0,0002

By using the hyperparameter composition that has been matched, the researcher uses a 100-day lookback from the testing data to predict the possibility of selling in the next 60

days. The results are presented in graphical form in Figure 9 and 10.

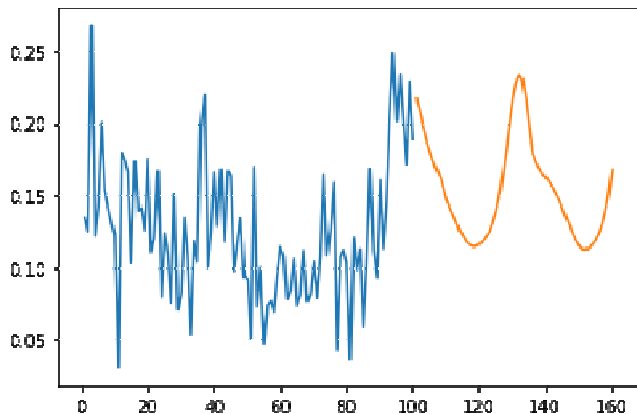


Fig. 9. Chart of Sales Prediction Results for the Next 60 Days

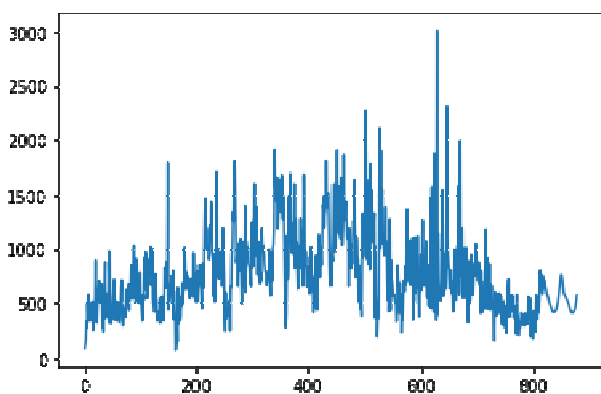


Fig. 10. Chart of Actual Merge and Predicted Results

The diagram above shows a graph starting from day 781 (in blue) until the prediction results are shown by the orange graph line. Prediction results are generated in the form of data with an interval range of 0 to 1. In order to make it easier to read the predicted data, a denormalization process is carried out. The following is a sample of the results of sales predictions for the next 60 days shown in Table 11.

TABLE XI. SAMPLE OF NORMALIZATION RESULTS

Date	Before Denormalization	After Denormalization
01/04/2020	0,216552	709,7967
02/04/2020	0,207718	683,8608
03/04/2020	0,196872	652,0167
04/04/2020	0,187789	625,3489
05/04/2020	0,180030	602,5673
06/04/2020	0,172879	581,5717
07/04/2020	0,168107	567,5609
08/04/2020	0,162540	551,2181
09/04/2020	0,155221	529,7274
10/04/2020	0,146479	504,0633

IV. CONCLUSION

Based on the research that has been done, it can be concluded that the best model obtained from LSTM with hyperparameter batch size 30, epoch 150, 3 hidden layers and 3 dropouts produces RMSE training of 0.0855 and RMSE testing 0.0846. During the training process, it is categorized as overfitting, namely the validation loss value is greater than the training loss. Overfitting occurs because the trained training data is easier to learn than the testing data. In addition, the size of the loss value is strongly influenced by the configuration of hyperparameter tuning such as data partition, hidden layer, batch size and epoch.

REFERENCES

- [1] R. M. van Steenberg and M. R. K. Mes, "Forecasting demand profiles of new products," *Decis. Support Syst.*, vol. 139, p. 113401, Dec. 2020, doi: 10.1016/j.dss.2020.113401.
- [2] L. R. Berry, P. Helman, and M. West, "Probabilistic forecasting of heterogeneous consumer transaction-sales time series," *Int. J. Forecast.*, vol. 36, no. 2, pp. 552–569, Apr. 2020, doi: 10.1016/j.ijforecast.2019.07.007.
- [3] H. Abbasimehr, M. Shabani, and M. Yousefi, "An optimized model using LSTM network for demand forecasting," *Comput. Ind. Eng.*, vol. 143, p. 106435, May 2020, doi: 10.1016/j.cie.2020.106435.
- [4] L. Liang and X. Cai, "Forecasting peer-to-peer platform default rate with LSTM neural network," *Electron. Commer. Res. Appl.*, vol. 43, p. 100997, Sep. 2020, doi: 10.1016/j.elerap.2020.100997.
- [5] K. M. Sabu and T. K. M. Kumar, "Predictive analytics in Agriculture: Forecasting prices of Arecanuts in Kerala," *Procedia Comput. Sci.*, vol. 171, pp. 699–708, 2020, doi: 10.1016/j.procs.2020.04.076.
- [6] S. Muzaffar and A. Afshari, "Short-Term Load Forecasts Using LSTM Networks," *Energy Procedia*, vol. 158, pp. 2922–2927, Feb. 2019, doi: 10.1016/j.egypro.2019.01.952.
- [7] M. Sarkar and A. De Bruyn, "LSTM Response Models for Direct Marketing Analytics: Replacing Feature Engineering with Deep Learning," *J. Interact. Mark.*, vol. 53, pp. 80–95, Feb. 2021, doi: 10.1016/j.intmar.2020.07.002.
- [8] S. Helmini, N. Jihan, M. Jayasinghe, and S. Perera, "Sales forecasting using multivariate long short term memory network models," *PeerJ Prepr.*, vol. 7, pp. 1–16, 2019, doi: https://doi.org/10.7287/peerj.preprints.27712v1.
- [9] A. Khumaidi, "Data Mining For Predicting The Amount Of Coffee Production Using CRISP-DM Method," *J. Techno Nusa Mandiri*, vol. 17, no. 1, pp. 1–8, Feb. 2020, doi: 10.33480/techno.v17i1.1240.
- [10] R. Nisbet, G. Miner, and K. Yale, "A Data Preparation Cookbook," in *Handbook of Statistical Analysis and Data Mining Applications*, Elsevier, 2018, pp. 727–740.
- [11] W. Li, B. Wang, J. Liu, G. Zhang, and J. Wang, "IGBT aging monitoring and remaining lifetime prediction based on long short-term memory (LSTM) networks," *Microelectron. Reliab.*, vol. 114, p. 113902, Nov. 2020, doi: 10.1016/j.microrel.2020.113902.
- [12] C. Panem, V. R. Gad, and R. S. Gad, "Sensor's data transmission with BPSK using LDPC (Min-Sum) error corrections over MIMO channel: Analysis over RMSE and BER," *Mater. Today Proc.*, vol. 27, pp. 571–575, 2020, doi: 10.1016/j.matpr.2019.12.039.
- [13] S. Lightstone, T. Teorey, and T. Nadeau, "Denormalization," in *Physical Database Design*, Elsevier, 2007, pp. 337–355.
- [14] D. Singh and B. Singh, "Investigating the impact of data normalization on classification performance," *Appl. Soft Comput.*, vol. 97, p. 105524, Dec. 2020, doi: 10.1016/j.asoc.2019.105524.
- [15] R. Indrakumari, T. Poongodi, and S. R. Jena, "Heart Disease Prediction using Exploratory Data Analysis," *Procedia Comput. Sci.*, vol. 173, pp. 130–139, 2020, doi: 10.1016/j.procs.2020.06.017.